

Four Seasons Life 3 residential complex

Location **Iskele, Bogazici**



About the project



Developer	Four Vision Development
Start of sale	01.03.2023
Key handover	2026
Houses/blocks	43
Building floor	2 Min 2 Max
Units total	90 - Studio, 218 - 1+1, 64 - 2+1

Distance to the sea - 600 m

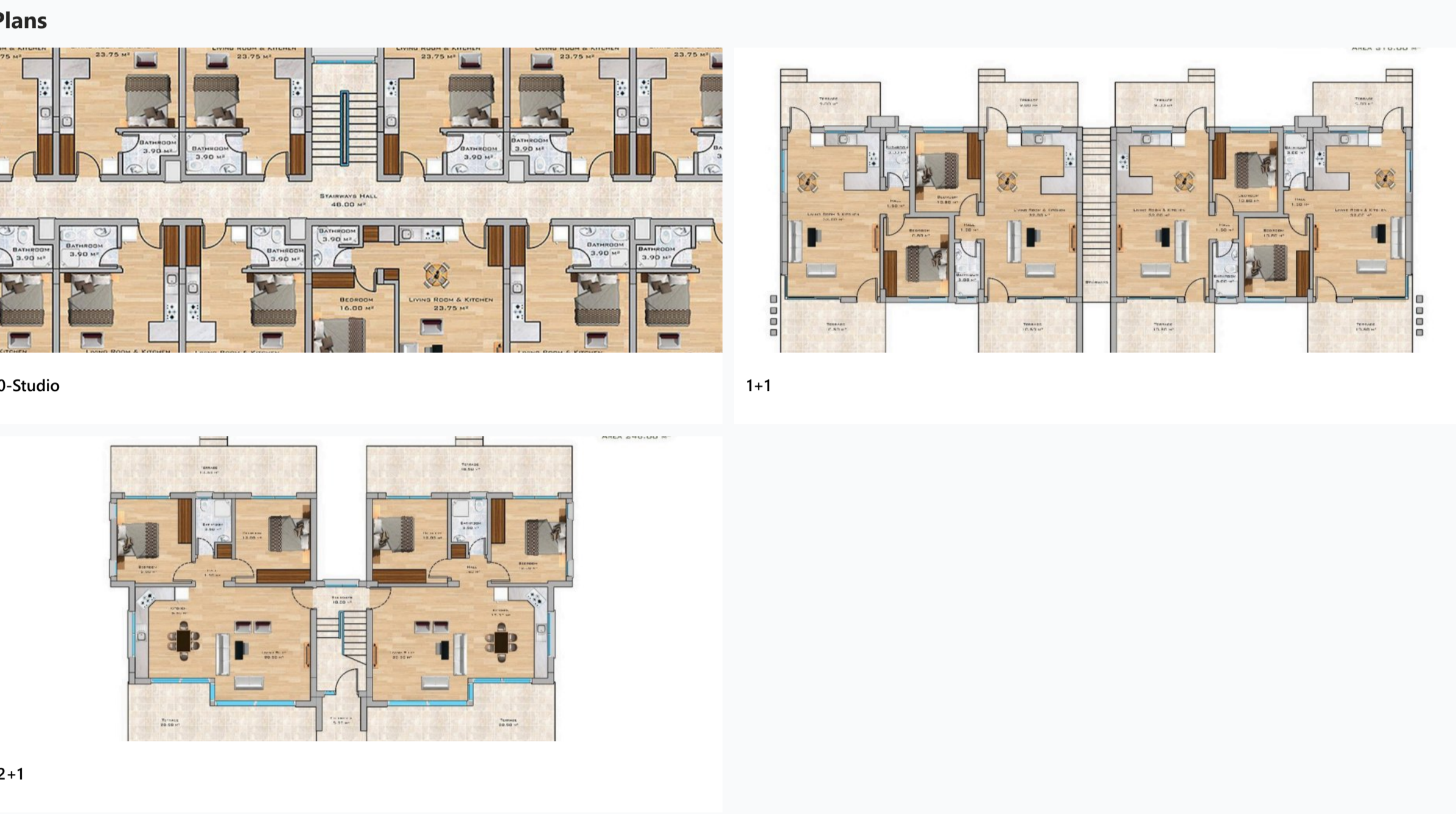
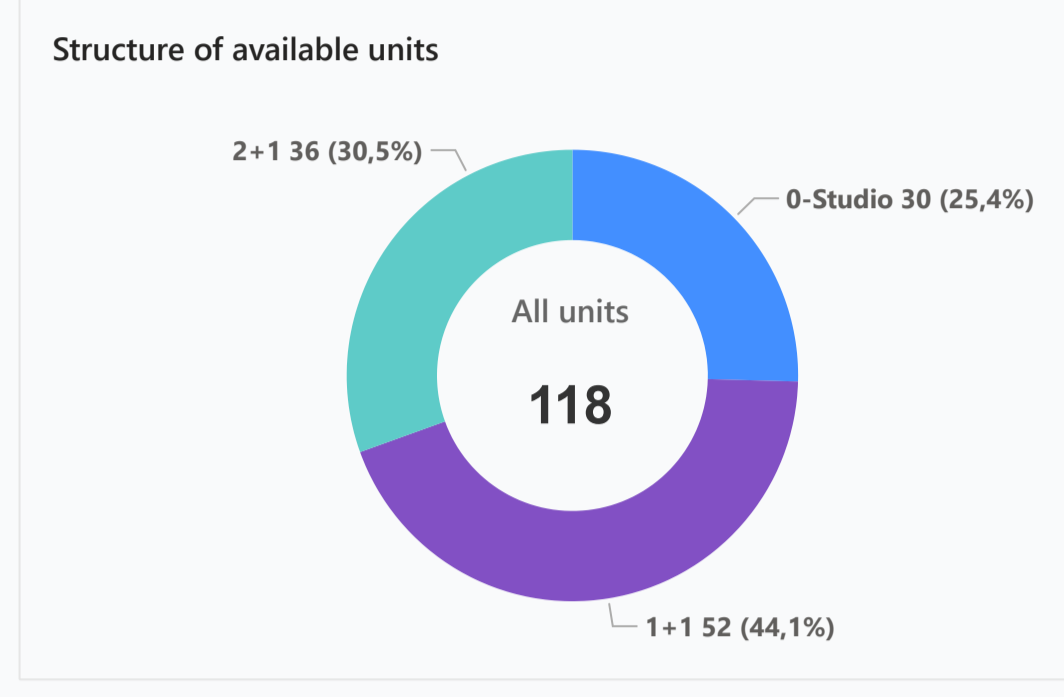
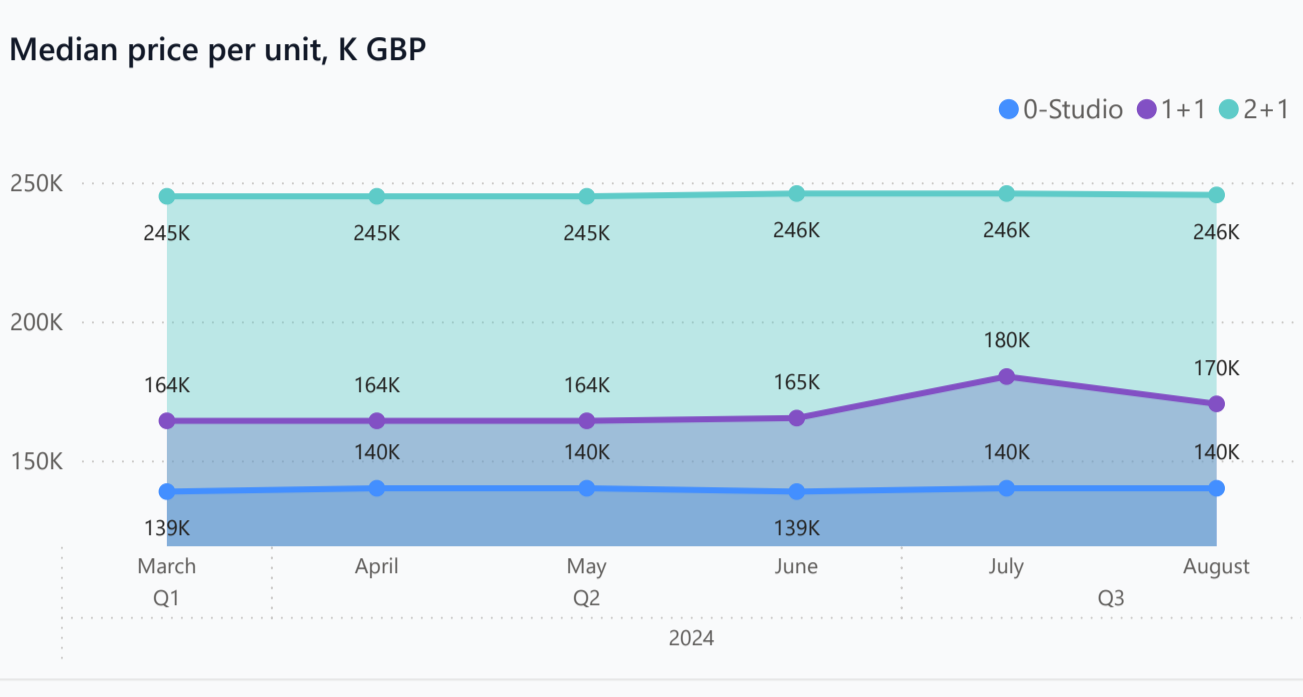
Distance to key locations:
 20 km from Famagusta, Eziç Premier - 700 m, Ekmar Supermarket - 1.0 km, Kar Market - 1.2 km, Eziç Girne - 1.3 km, Kamiloglu Hastanesi - 1.5 km, Ozel Girne Hastanesi - 1.6 km, Pia Bella Hotel - 1.7 km, Savoy Ottoman Palace Hotel - 1.7 km, Girne Limani - 2.0 km, Girne Kalesi - 2.1 km

Four Seasons Life III: Where the Unique Beauty of the Sea Meets Modern Living. The Four Seasons Life III project is a serene reflection of modern living, located just 600 meters away from the sea and comprising 738 residences. This project seamlessly blends the blue of the sea with the green of nature, designed to offer you an enriching experience in life. Project Details: At the heart of the project, there is a restaurant that will crown your moments with delicious flavors. Surrounded by a large pool, this restaurant offers a splendid fusion of nature and modern design. Natural living spaces created through a 40% landscaping effort create a peaceful atmosphere enveloping the project.

Complex infrastructure

- Aqua park
- BBQ area
- Beauty salon
- Central generator
- Central satellite
- Closed territory
- Kid's playground
- Kid's pool
- Open pool
- Parking
- Restaurant
- Security Camera System
- Tennis court
- VRF system

Available units 118 / 376 total



Payment plans

Deposit (non-refundable) 5000 GBP for a month

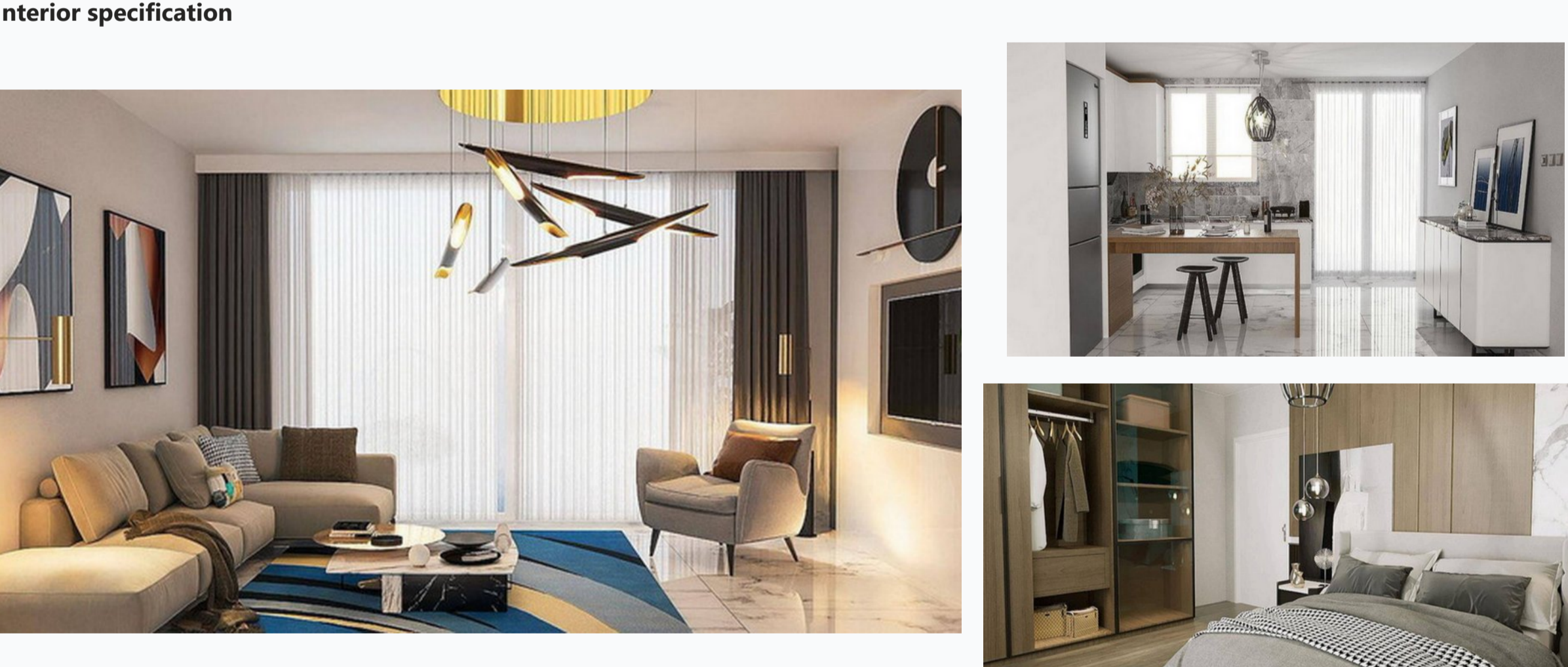
Option	Down payment	Installments months	Discount	Offer
Option 1	35%	45% till key, 20%...	-	-
Option 2	-	-	-	-
Option 3	-	-	-	-
Option 4	-	-	-	-

Special offer: Fully furnished design package, Rental guarantee

Trafo 5000 GBP, Resale, Maintenance fee, Rental services

Details

Bedrooms	Subtype	Block	Unit №	Floor	View	Bathroom	Internal area, sq. m	Balcony/ Terrace, sq. m	Rooftop terrace, sq. m	Garden, sq. m	Gross covered area, sq. m	Current price, GBP	Price per sqm, GBP
0-Studio	Flat	Crystal St. - Breeze	17-W	01			36	6	39		81	135 000	1 667
0-Studio	Flat	Crystal St. - Breeze	13-W	01			37	6	39		81	135 000	1 667
0-Studio	Flat	Crystal St. - Breeze	17-P	01			36	6	39		81	138 000	1 704
0-Studio	Flat	Crystal St. - Breeze	13-P	01			36	6	39		81	138 000	1 704
0-Studio	Flat	Crystal St. - Breeze	17-V	01			37	6	40		83	140 000	1 687
0-Studio	Flat	Crystal St. - Breeze	11-V	01			37	6	40		83	154 000	1 855
0-Studio	Flat	Crystal St. - Breeze	15-V	01			37	6	40		83	154 000	1 855
0-Studio	Flat	Crystal St. - Breeze	13-S	01			48	6	37		91	145 000	1 593
0-Studio	Flat	Crystal St. - Breeze	13-T	01			48	6	37		92	135 000	1 467
0-Studio	Flat	Crystal St. - Breeze	11-T	01			48	6	37		92	142 000	1 543
0-Studio	Flat	Crystal St. - Breeze	15-T	01			48	6	37		92	142 000	1 543
0-Studio	Flat	Crystal St. - Breeze	9-T	01			48	6	37		92	142 000	1 543
0-Studio	Flat	Crystal St. - Breeze	17-S	01			48	6	37		92	145 000	1 576
0-Studio	Flat	Crystal St. - Breeze	11-S	01			48	6	37		92	154 000	1 674
0-Studio	Flat	Crystal St. - Breeze	15-S	01			48	6	37		92	154 000	1 674
1+1	Flat	Amber - Storm	8-B	0			54	21			75	164 250	2 190
1+1	Flat	Amber - Storm	10-A	0			54	21			75	170 350	2 271
1+1	Flat	Amber - Storm	4-D	0			54	21			75	170 350	2 271
1+1	Loft	Amber - Storm	10-F	01			53	5			58	158 600	2 734
1+1	Loft	Amber - Storm	10-I	01			53	5			58	158 600	2 734
1+1	Loft	Amber - Storm	10-G	01			61	5			66	164 250	2 489
1+1	Loft	Amber - Storm	2-G	01			61	5			66	164 250	2 489
1+1	Loft	Amber - Storm	8-G	01			61	5			66	164 250	2 489
1+1	Loft	Amber - Storm	10-E	01			56	5			61	160 600	2 633
1+1	Loft	Amber - Storm	4-E	01			56	5			61	160 600	2 633
1+1	Loft	Amber - Storm	6-E	01			56	5			61	160 600	2 633
1+1	Loft	Amber - Storm	8-E	01			56	5			61	160 600	2 633
1+1	Loft	Amber - Storm	10-J	01			56	5			61	164 250	2 693



- #### Interior specification
- 60/120cm high quality floor tiles
 - Air Conditioner
 - Double glazed windows
 - Granite kitchen worktop
 - High quality internal doors
 - High quality taps and showers
 - Laminate flooring in the bedrooms
 - Toilet integrated in the walls
 - Underfloor heating in bathrooms
 - Ventilation in bathrooms



- #### Exterior specification
- Glass fence balcony
 - Landscape design
 - Terracing with inbuilt lighting & power sockets

